

## Recycling market— Repris (Öjebyn)

You can leave textiles, furniture and items that still work at Repris in Öjebyn.

If you want to recycle furniture you call Repris and they will fetch the items you want to get rid of.

Phone no : 696 177

How to sort your household waste

Address:  
Garagevägen 3,  
Box 555  
943 28 Öjebyn

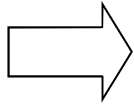
Phone no: 0911—931 00  
E-post : [info@pireva.se](mailto:info@pireva.se)  
[www.pireva.se](http://www.pireva.se)

## How to sort your household waste



**PIREVA**  
PITEÅ RENHÅLLNING & VATTEN

## What can I put in my brown bin?



### Food leftovers

- ◆ fruit and vegetables: orange peel, potato peel.
- ◆ left-over food: bones, fish
- ◆ coffee, tea bags, flowers, plants.

Use the paper bag you have received from Renhållningen!

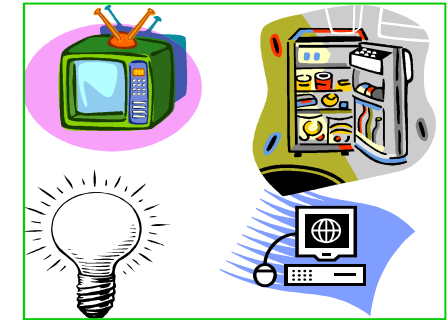


You should not put these items in the brown bin. Put them in the green bin instead.

- ◆ plastic bags
- ◆ vacuum cleaner bags, cigarette butts
- ◆ sanitary towels, diapers
- ◆ textiles

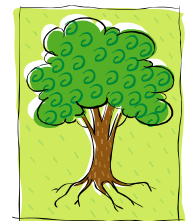
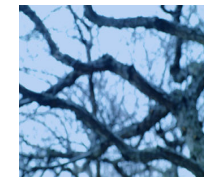
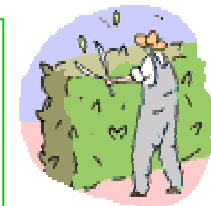
## How to sort your household waste

Electrical and electronic waste: everything from light bulbs to toys



### Hazardous waste

- ◆ garden waste
- ◆ hedge clippings
- ◆ grass cuttings
- ◆ leaves
- ◆ branches
- ◆ wood



## Newspapers, catalogues

Put them in the container for newspapers.



## Batteries

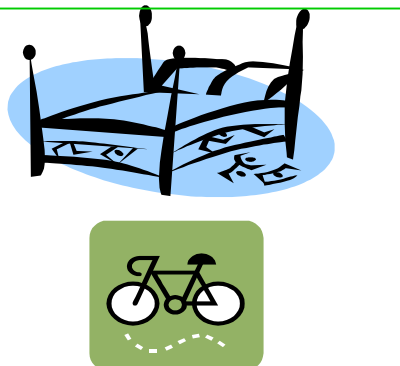
Put the batteries in the special red containers

## Recycling centre – Öjebyn

Here you can bring **everything**.  
The recycling centre lies on Bredviksberget,



## Old furniture and bicycles



## How to sort your household waste

### What can I put in my green bin?

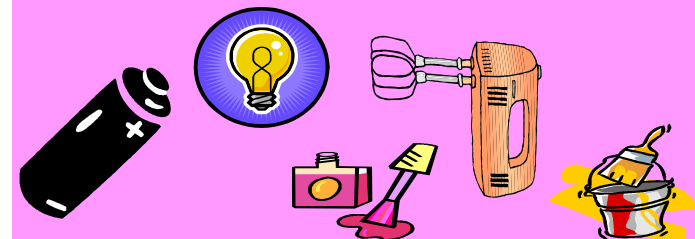
#### Burning waste



- ♦ dirty paper
- ♦ vacuum cleaner bags
- ♦ sanitary goods
- ♦ soft plastic packaging
- ♦ plastic bags
- ♦ textiles, shoes
- ♦ broken household tools and toys



You should not put these items in the green or brown bin. Take them to the recycling centre in Öjebyn.



# Recycling station — only for paper and packaging

You have different containers for

- ◆ four sorts of packaging
- ◆ newspapers



## Metal packaging:

- ◆ all kinds of cans and tubes
- ◆ aluminium foil and aluminium products



- Paint or glue tubes, still containing paint
- Non-packaging items like frying pans



China, light bulbs or pottery do not belong here.



## Glass packaging:

- ◆ bottles and jars with coloured and clear glass



# How to sort your household waste

## Hard plastic packaging

- ◆ Bottles
- ◆ pots
- ◆ small buckets

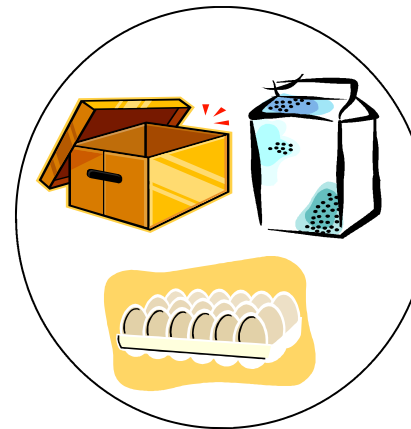


Plastic items that are not packaging (toys, furniture)



## Paper packaging:

- ◆ boxes
- ◆ wrapping paper
- ◆ milk and juice boxes
- ◆ sugar and flour bags



Newspapers should be put in the container for newspapers.